

Write your name here

Surname

Other names

Pearson
Edexcel GCE

Centre Number

--	--	--	--	--	--

Candidate Number

--	--	--	--	--	--

Core Mathematics C2

Advanced Subsidiary

Wednesday 24 May 2017 – Morning
Time: 1 hour 30 minutes

Paper Reference

6664/01**You must have:**

Mathematical Formulae and Statistical Tables (Pink)

Total Marks

--

Candidates may use any calculator allowed by the regulations of the Joint Council for Qualifications. Calculators must not have the facility for symbolic algebra manipulation, differentiation and integration, or have retrievable mathematical formulae stored in them.

Instructions

- Use **black** ink or ball-point pen.
- If pencil is used for diagrams/sketches/graphs it must be dark (HB or B). Coloured pencils and highlighter pens must not be used.
- **Fill in the boxes** at the top of this page with your name, centre number and candidate number.
- Answer **all** questions and ensure that your answers to parts of questions are clearly labelled.
- Answer the questions in the spaces provided – *there may be more space than you need.*
- You should show sufficient working to make your methods clear. Answers without working may not gain full credit.
- When a calculator is used, the answer should be given to an appropriate degree of accuracy.

Information

- The total mark for this paper is 75.
- The marks for **each** question are shown in brackets – *use this as a guide as to how much time to spend on each question.*

Advice

- Read each question carefully before you start to answer it.
- Try to answer every question.
- Check your answers if you have time at the end.

Turn over ►

P44824A

©2017 Pearson Education Ltd.

1/1/2/1/1/1/



Pearson

Question 1 continued

25 horizontal lines for writing answers.

Q1

(Total 4 marks)

DO NOT WRITE IN THIS AREA

DO NOT WRITE IN THIS AREA

DO NOT WRITE IN THIS AREA



Leave
blank

Question 2 continued

Area with horizontal lines for writing the answer to Question 2.

DO NOT WRITE IN THIS AREA

DO NOT WRITE IN THIS AREA

DO NOT WRITE IN THIS AREA

Q2

(Total 4 marks)



P 4 4 8 2 4 A 0 5 3 2

3. (a) $y = 5^x + \log_2(x + 1), \quad 0 \leq x \leq 2$

Complete the table below, by giving the value of y when $x = 1$

x	0	0.5	1	1.5	2
y	1	2.821		12.502	26.585

(1)

- (b) Use the trapezium rule, with all the values of
- y
- from the completed table, to find an approximate value for

$$\int_0^2 (5^x + \log_2(x + 1)) dx$$

giving your answer to 2 decimal places.

(4)

- (c) Use your answer to part (b) to find an approximate value for

$$\int_0^2 (5 + 5^x + \log_2(x + 1)) dx$$

giving your answer to 2 decimal places.

(1)

DO NOT WRITE IN THIS AREA

DO NOT WRITE IN THIS AREA

DO NOT WRITE IN THIS AREA



Question 3 continued

DO NOT WRITE IN THIS AREA

DO NOT WRITE IN THIS AREA

DO NOT WRITE IN THIS AREA



Leave
blank

Question 3 continued

Lined area for writing the answer to Question 3.

DO NOT WRITE IN THIS AREA

DO NOT WRITE IN THIS AREA

DO NOT WRITE IN THIS AREA

(Total 6 marks)

Q3



4.

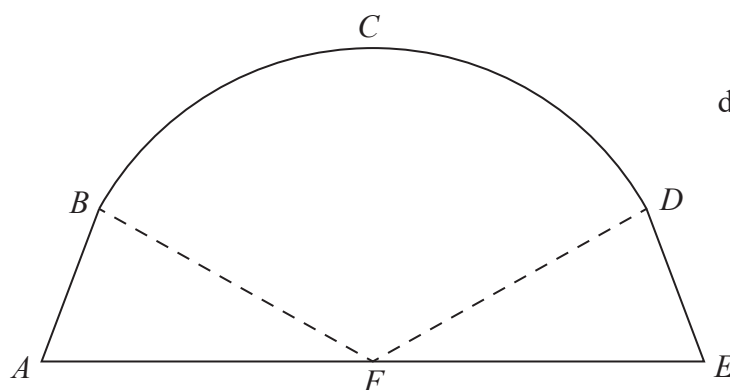


Diagram not drawn to scale

Figure 1

Figure 1 is a sketch representing the cross-section of a large tent $ABCDEF$.
 AB and DE are line segments of equal length.
Angle FAB and angle DEF are equal.
 F is the midpoint of the straight line AE and FC is perpendicular to AE .
 BCD is an arc of a circle of radius 3.5 m with centre at F .
It is given that

$$\begin{aligned} AF = FE &= 3.7\text{ m} \\ BF = FD &= 3.5\text{ m} \\ \text{angle } BFD &= 1.77 \text{ radians} \end{aligned}$$

Find

- (a) the length of the arc BCD in metres to 2 decimal places, (2)
- (b) the area of the sector $FBCD$ in m^2 to 2 decimal places, (2)
- (c) the total area of the cross-section of the tent in m^2 to 2 decimal places. (4)

DO NOT WRITE IN THIS AREA

DO NOT WRITE IN THIS AREA

DO NOT WRITE IN THIS AREA



Leave
blank

Question 4 continued

Lined area for writing answers, consisting of multiple horizontal lines.

DO NOT WRITE IN THIS AREA

DO NOT WRITE IN THIS AREA

DO NOT WRITE IN THIS AREA



P 4 4 8 2 4 A 0 1 1 3 2

5. The circle C has equation

$$x^2 + y^2 - 10x + 6y + 30 = 0$$

Find

- (a) the coordinates of the centre of C , (2)
- (b) the radius of C , (2)
- (c) the y coordinates of the points where the circle C crosses the line with equation $x = 4$, giving your answers as simplified surds. (3)

DO NOT WRITE IN THIS AREA

DO NOT WRITE IN THIS AREA

DO NOT WRITE IN THIS AREA



Leave
blank

Question 5 continued

DO NOT WRITE IN THIS AREA

DO NOT WRITE IN THIS AREA

DO NOT WRITE IN THIS AREA

Lined area for writing the answer to Question 5.

(Total 7 marks)

Q5



6.

$$f(x) = -6x^3 - 7x^2 + 40x + 21$$

(a) Use the factor theorem to show that $(x + 3)$ is a factor of $f(x)$

(2)

(b) Factorise $f(x)$ completely.

(4)

(c) Hence solve the equation

$$6(2^{3y}) + 7(2^{2y}) = 40(2^y) + 21$$

giving your answer to 2 decimal places.

(3)

DO NOT WRITE IN THIS AREA

DO NOT WRITE IN THIS AREA

DO NOT WRITE IN THIS AREA



Question 6 continued

DO NOT WRITE IN THIS AREA

DO NOT WRITE IN THIS AREA

DO NOT WRITE IN THIS AREA



Leave blank

Question 6 continued

DO NOT WRITE IN THIS AREA

DO NOT WRITE IN THIS AREA

DO NOT WRITE IN THIS AREA

Lined area for writing the answer to Question 6.

(Total 9 marks)

Q6



P 4 4 8 2 4 A 0 1 9 3 2

DO NOT WRITE IN THIS AREA

DO NOT WRITE IN THIS AREA

DO NOT WRITE IN THIS AREA

Question 7 continued

Area with horizontal lines for writing answers.

(Total 7 marks)

Q7



Leave blank

Question 8 continued

A series of horizontal lines provided for writing the answer to Question 8.

DO NOT WRITE IN THIS AREA

DO NOT WRITE IN THIS AREA

DO NOT WRITE IN THIS AREA

Q8

(Total 8 marks)



9. The first three terms of a geometric sequence are

$$7k - 5, 5k - 7, 2k + 10$$

where k is a constant.

- (a) Show that $11k^2 - 130k + 99 = 0$ (4)

Given that k is not an integer,

- (b) show that $k = \frac{9}{11}$ (2)

For this value of k ,

- (c) (i) evaluate the fourth term of the sequence, giving your answer as an exact fraction,
(ii) evaluate the sum of the first ten terms of the sequence. (6)

DO NOT WRITE IN THIS AREA

DO NOT WRITE IN THIS AREA

DO NOT WRITE IN THIS AREA



Leave blank

Question 9 continued

DO NOT WRITE IN THIS AREA

DO NOT WRITE IN THIS AREA

DO NOT WRITE IN THIS AREA

Q9

(Total 12 marks)



10.

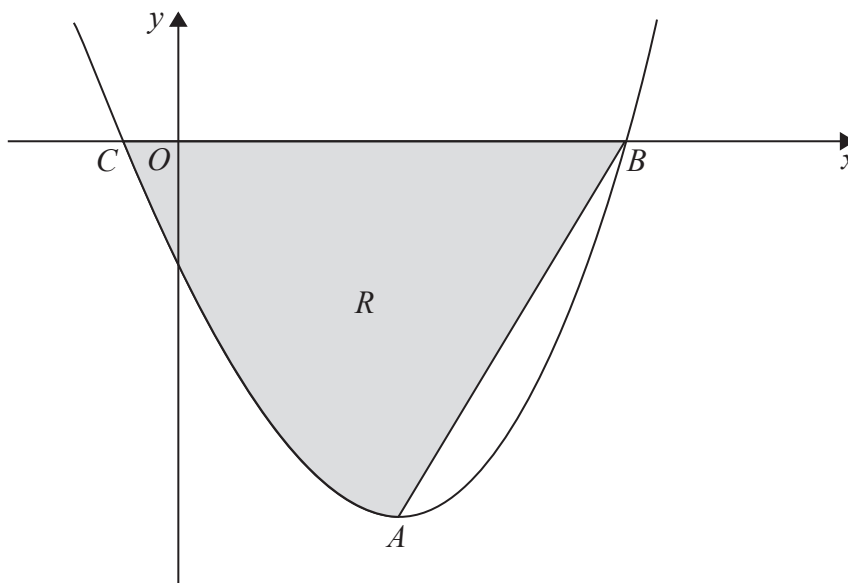


Figure 2

Figure 2 shows a sketch of part of the curve with equation

$$y = 4x^3 + 9x^2 - 30x - 8, \quad -0.5 \leq x \leq 2.2$$

The curve has a turning point at the point *A*.

- (a) Using calculus, show that the *x* coordinate of *A* is 1 (3)

The curve crosses the *x*-axis at the points $B(2, 0)$ and $C\left(-\frac{1}{4}, 0\right)$

The finite region *R*, shown shaded in Figure 2, is bounded by the curve, the line *AB*, and the *x*-axis.

- (b) Use integration to find the area of the finite region *R*, giving your answer to 2 decimal places. (7)

DO NOT WRITE IN THIS AREA

DO NOT WRITE IN THIS AREA

DO NOT WRITE IN THIS AREA



Question 10 continued

Lined area for writing the answer to Question 10. The area contains approximately 30 horizontal lines.

DO NOT WRITE IN THIS AREA

DO NOT WRITE IN THIS AREA

DO NOT WRITE IN THIS AREA



Leave
blank

Question 10 continued

DO NOT WRITE IN THIS AREA

DO NOT WRITE IN THIS AREA

DO NOT WRITE IN THIS AREA



