

Leave
blank

3.

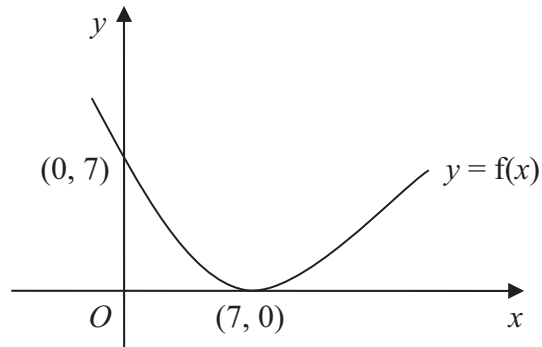
**Figure 1**

Figure 1 shows a sketch of the curve with equation $y = f(x)$. The curve passes through the point $(0, 7)$ and has a minimum point at $(7, 0)$.

On separate diagrams, sketch the curve with equation

(a) $y = f(x) + 3$, **(3)**

(b) $y = f(2x)$. **(2)**

On each diagram, show clearly the coordinates of the minimum point and the coordinates of the point at which the curve crosses the y -axis.



Question 3 continued

Leave
blank

(Total 5 marks)

Q3

5

Turn over





Leave blank

Question 4 continued

Lined writing area for the question.

Q4

(Total 5 marks)

7

Turn over



5. A sequence x_1, x_2, x_3, \dots is defined by

$$x_1 = 1,$$

$$x_{n+1} = ax_n - 3, \quad n \geq 1,$$

where a is a constant.

- (a) Find an expression for x_2 in terms of a . (1)

- (b) Show that $x_3 = a^2 - 3a - 3$. (2)

Given that $x_3 = 7$,

- (c) find the possible values of a . (3)



Question 5 continued

Leave
blank

Lined area for writing the answer to Question 5.

(Total 6 marks)

Q5

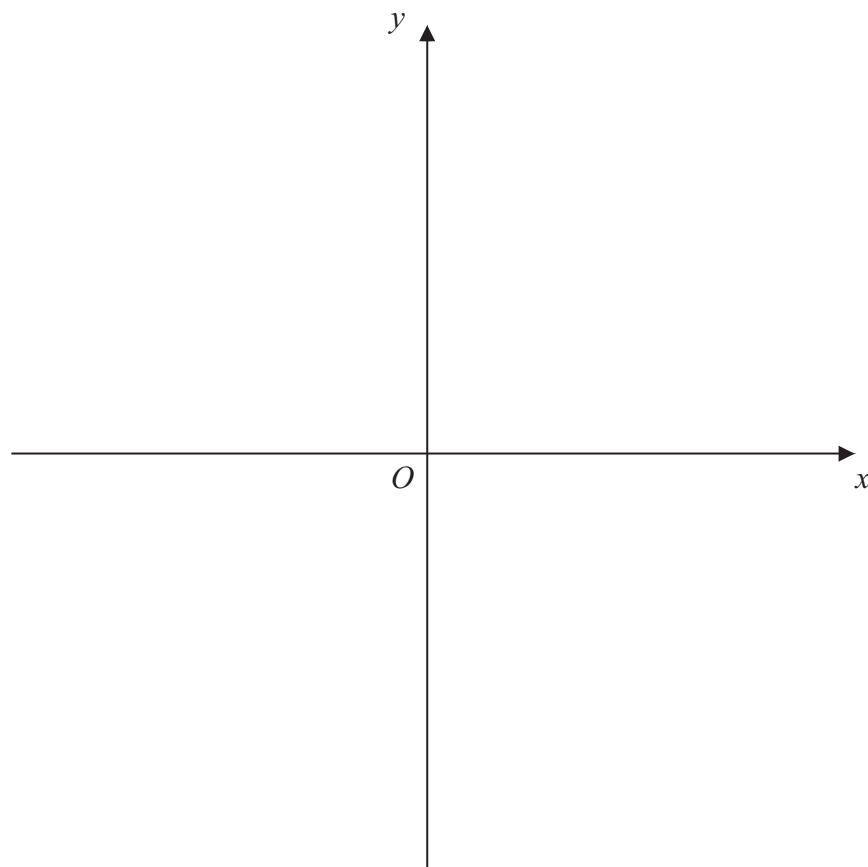


Leave
blank

6. The curve C has equation $y = \frac{3}{x}$ and the line l has equation $y = 2x + 5$.

(a) On the axes below, sketch the graphs of C and l , indicating clearly the coordinates of any intersections with the axes. (3)

(b) Find the coordinates of the points of intersection of C and l . (6)



Question 6 continued

A large rectangular area containing numerous horizontal lines for writing answers.

Leave
blank

(Total 9 marks)

Q6

A small rectangular box for marking the question.



Question 7 continued

Leave
blank

A series of horizontal lines for writing, intended for the answer to Question 7.



Leave blank

10.

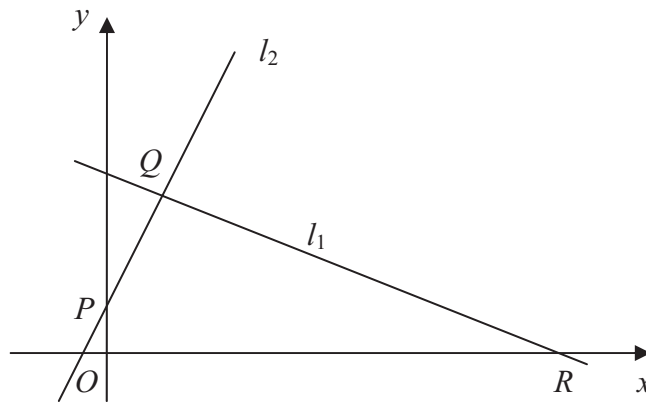


Figure 2

The points $Q(1, 3)$ and $R(7, 0)$ lie on the line l_1 , as shown in Figure 2.

The length of QR is $a\sqrt{5}$.

- (a) Find the value of a . (3)

The line l_2 is perpendicular to l_1 , passes through Q and crosses the y -axis at the point P , as shown in Figure 2.

Find

- (b) an equation for l_2 , (5)

- (c) the coordinates of P , (1)

- (d) the area of ΔPQR . (4)



Question 10 continued

Lined area for writing the answer to Question 10.

Leave blank



H 2 9 9 9 2 A 0 2 3 2 8

Leave
blank

Question 10 continued

Lined area for writing the answer to Question 10.

(Total 13 marks)

Q10

--	--



