

Write your name here

Surname

Other names

**Pearson Edexcel**  
**International**  
**Advanced Level**

Centre Number

--	--	--	--	--	--

Candidate Number

--	--	--	--	--

# Core Mathematics C34

## Advanced

Monday 26 January 2015 – Afternoon  
**Time: 2 hours 30 minutes**

Paper Reference

**WMA02/01****You must have:**

Mathematical Formulae and Statistical Tables (Blue)

Total Marks

--

**Candidates may use any calculator allowed by the regulations of the Joint Council for Qualifications. Calculators must not have the facility for symbolic algebra manipulation, differentiation and integration, or have retrievable mathematical formulae stored in them.**

**Instructions**

- Use **black** ink or ball-point pen.
- If pencil is used for diagrams/sketches/graphs it must be dark (HB or B). Coloured pencils and highlighter pens must not be used.
- **Fill in the boxes** at the top of this page with your name, centre number and candidate number.
- Answer **all** questions and ensure that your answers to parts of questions are clearly labelled.
- Answer the questions in the spaces provided – *there may be more space than you need.*
- You should show sufficient working to make your methods clear. Answers without working may not gain full credit.
- When a calculator is used, the answer should be given to an appropriate degree of accuracy.

**Information**

- The total mark for this paper is 125.
- The marks for **each** question are shown in brackets – *use this as a guide as to how much time to spend on each question.*

**Advice**

- Read each question carefully before you start to answer it.
- Try to answer every question.
- Check your answers if you have time at the end.

Turn over ►

P45058A

©2015 Pearson Education Ltd.

5/5/1/1/1/


**PEARSON**





















































































12.

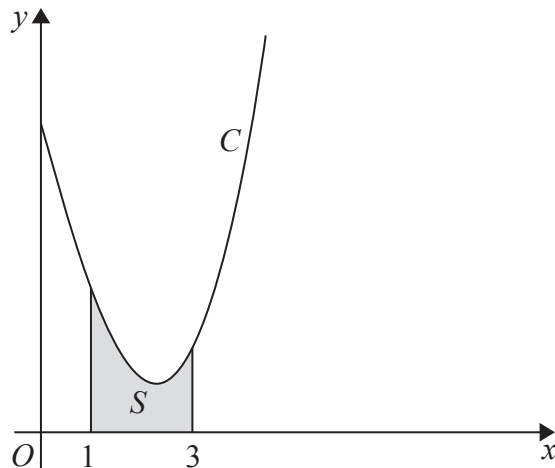


Figure 4

Figure 4 shows a sketch of part of the curve  $C$  with equation

$$y = \frac{x^2 \ln x}{3} - 2x + 4, \quad x > 0$$

The finite region  $S$ , shown shaded in Figure 4, is bounded by the curve  $C$ , the  $x$ -axis and the lines with equations  $x = 1$  and  $x = 3$

- (a) Complete the table below with the value of  $y$  corresponding to  $x = 2$ . Give your answer to 4 decimal places.

$x$	1	1.5	2	2.5	3
$y$	2	1.3041		0.9089	1.2958

(1)

- (b) Use the trapezium rule, with all the values of  $y$  in the completed table, to obtain an estimate for the area of  $S$ , giving your answer to 3 decimal places.

(3)

- (c) Use calculus to find the exact area of  $S$ .

Give your answer in the form  $\frac{a}{b} + \ln c$ , where  $a$ ,  $b$  and  $c$  are integers.

(6)

- (d) Hence calculate the percentage error in using your answer to part (b) to estimate the area of  $S$ . Give your answer to one decimal place.

(2)

- (e) Explain how the trapezium rule could be used to obtain a more accurate estimate for the area of  $S$ .

(1)



















