

Write your name here

Surname

Other names

**Pearson Edexcel**  
**International**  
**Advanced Level**

Centre Number

--	--	--	--	--	--

Candidate Number

--	--	--	--	--	--

# Core Mathematics C12

## Advanced Subsidiary

Monday 10 October 2016 – Morning  
**Time: 2 hours 30 minutes**

Paper Reference

**WMA01/01****You must have:**

Mathematical Formulae and Statistical Tables (Blue)

Total Marks

--

**Candidates may use any calculator allowed by the regulations of the Joint Council for Qualifications. Calculators must not have the facility for symbolic algebra manipulation, differentiation and integration, or have retrievable mathematical formulae stored in them.**

### Instructions

- Use **black** ink or ball-point pen.
- If pencil is used for diagrams/sketches/graphs it must be dark (HB or B). Coloured pencils and highlighter pens must not be used.
- **Fill in the boxes** at the top of this page with your name, centre number and candidate number.
- Answer **all** questions and ensure that your answers to parts of questions are clearly labelled.
- Answer the questions in the spaces provided – *there may be more space than you need.*
- You should show sufficient working to make your methods clear. Answers without working may not gain full credit.
- When a calculator is used, the answer should be given to an appropriate degree of accuracy.

### Information

- The total mark for this paper is 125.
- The marks for **each** question are shown in brackets – *use this as a guide as to how much time to spend on each question.*

### Advice

- Read each question carefully before you start to answer it.
- Try to answer every question.
- Check your answers if you have time at the end.

Turn over ►

P48253A

©2016 Pearson Education Ltd.

1/1/1/


**PEARSON**





































7. (a) Sketch the graph of  $y = 3^{x-2}$ ,  $x \in \mathbb{R}$   
Give the exact values for the coordinates of the point where your graph crosses the  $y$ -axis. (2)

The table below gives corresponding values of  $x$  and  $y$ , for  $y = 3^{x-2}$   
The values of  $y$  are rounded to 3 decimal places where necessary.

$x$	0.5	1	1.5	2	2.5	3
$y$	0.192	0.333	0.577	1	1.732	3

- (b) Use the trapezium rule with all the values of  $y$  from the table to find an approximate value for

$$\int_{0.5}^3 3^{x-2} dx$$

Give your answer to 2 decimal places. (4)

DO NOT WRITE IN THIS AREA

DO NOT WRITE IN THIS AREA

DO NOT WRITE IN THIS AREA



DO NOT WRITE IN THIS AREA

DO NOT WRITE IN THIS AREA

DO NOT WRITE IN THIS AREA

Question 7 continued

[Lined area for writing answer]

Q7

(Total 6 marks)



8.

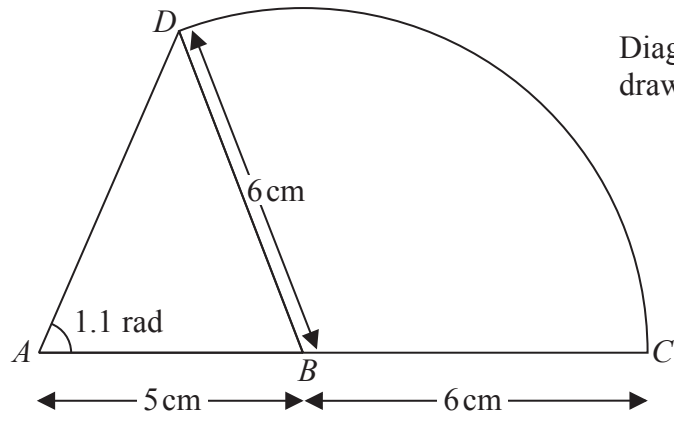


Diagram not drawn to scale

Figure 1

The compound shape  $ABCD$ , shown in Figure 1, consists of a triangle  $ABD$  joined along its edge  $BD$  to a sector  $DBC$  of a circle with centre  $B$  and radius  $6$  cm. The points  $A$ ,  $B$  and  $C$  lie on a straight line with  $AB = 5$  cm and  $BC = 6$  cm. Angle  $DAB = 1.1$  radians.

- (a) Show that angle  $ABD = 1.20$  radians to 3 significant figures. (4)
- (b) Find the area of the compound shape, giving your answer to 3 significant figures. (4)

---

---

---

---

---

---

---

---

---

---

---

---

---

---

---

---

---

---

---

---

---

---

---

---

---

---

DO NOT WRITE IN THIS AREA

DO NOT WRITE IN THIS AREA

DO NOT WRITE IN THIS AREA





**Question 8 continued**

Blank writing area consisting of 30 horizontal lines for student responses.

DO NOT WRITE IN THIS AREA

DO NOT WRITE IN THIS AREA

DO NOT WRITE IN THIS AREA





9. In a large theatre there are 20 rows of seats.

The number of seats in the first row is  $a$ , where  $a$  is a constant.

In the second row the number of seats is  $(a + d)$ , where  $d$  is a constant. In the third row the number of seats is  $(a + 2d)$ , and on each subsequent row there are  $d$  more seats than on the previous row. The number of seats in each row forms an arithmetic sequence.

The **total** number of seats in the first 10 rows is 395

(a) Use this information to show that  $10a + 45d = 395$  (1)

The **total** number of seats in the first 18 rows is 927

(b) Use this information to write down a second simplified equation relating  $a$  and  $d$ . (2)

(c) Solve these equations to find the value of  $a$  and the value of  $d$ . (3)

(d) Find the number of seats in the 20th row of the theatre. (2)

---

---

---

---

---

---

---

---

---

---

---

---

---

---

---

---

---

---

---

---

---

---

---

---

---

---

DO NOT WRITE IN THIS AREA

DO NOT WRITE IN THIS AREA

DO NOT WRITE IN THIS AREA





Leave blank

Question 9 continued

Lined area for writing the answer to Question 9.

DO NOT WRITE IN THIS AREA

DO NOT WRITE IN THIS AREA

DO NOT WRITE IN THIS AREA



P 4 8 2 5 3 A 0 2 5 4 8





10. (a) Given that

$$8 \tan x = -3 \cos x$$

show that

$$3 \sin^2 x - 8 \sin x - 3 = 0$$

(3)

(b) Hence solve, for  $0 \leq \theta < 360^\circ$ ,

$$8 \tan 2\theta = -3 \cos 2\theta$$

giving your answers to one decimal place.

*(Solutions based entirely on graphical or numerical methods are not acceptable.)*

(5)

---

---

---

---

---

---

---

---

---

---

---

---

---

---

---

---

---

---

---

---

---

---

---

---

---

---

---

---

---

---

DO NOT WRITE IN THIS AREA

DO NOT WRITE IN THIS AREA

DO NOT WRITE IN THIS AREA









12.

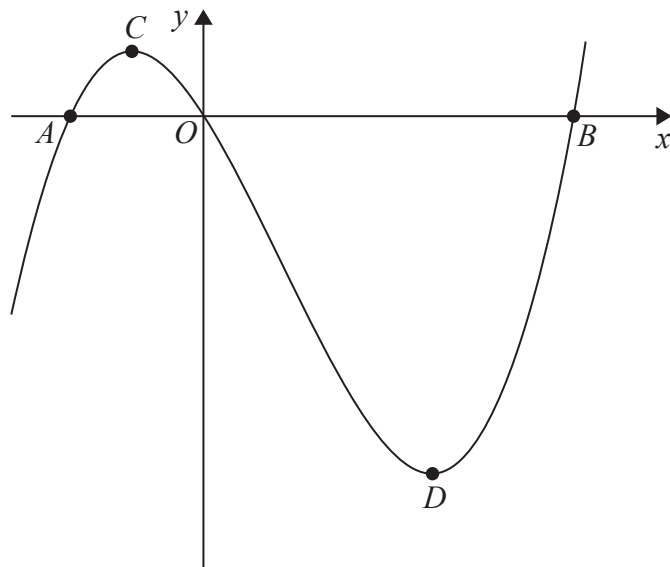


Figure 2

Figure 2 shows a sketch of the curve with equation  $y = f(x)$ , where

$$f(x) = \frac{x^3 - 9x^2 - 81x}{27}$$

The curve crosses the  $x$ -axis at the point  $A$ , the point  $B$  and the origin  $O$ .  
The curve has a maximum turning point at  $C$  and a minimum turning point at  $D$ .

(a) Use algebra to find exact values for the  $x$  coordinates of the points  $A$  and  $B$ . (4)

(b) Use calculus to find the coordinates of the points  $C$  and  $D$ . (6)

The graph of  $y = f(x + a)$ , where  $a$  is a constant, has its minimum turning point on the  $y$ -axis.

(c) Write down the value of  $a$ . (1)

---

---

---

---

---

---

---

---

---

---

---

---

---

DO NOT WRITE IN THIS AREA

DO NOT WRITE IN THIS AREA

DO NOT WRITE IN THIS AREA







Leave blank

Question 12 continued

DO NOT WRITE IN THIS AREA

DO NOT WRITE IN THIS AREA

DO NOT WRITE IN THIS AREA

Horizontal lines for writing answers.

Q12

(Total 11 marks)

Small square box for mark allocation.



**13.** The circle  $C$  has centre  $A(1, -3)$  and passes through the point  $P(8, -2)$ .

- (a) Find an equation for the circle  $C$ . **(4)**

The line  $l_1$  is the tangent to  $C$  at the point  $P$ .

- (b) Find an equation for  $l_1$ , giving your answer in the form  $y = mx + c$  **(4)**

The line  $l_2$ , with equation  $y = x + 6$ , is the tangent to  $C$  at the point  $Q$ .

- (c) Find the coordinates of the point  $Q$ . **(5)**

---

---

---

---

---

---

---

---

---

---

---

---

---

---

---

---

---

---

---

---

---

---

---

---

---

---

---

DO NOT WRITE IN THIS AREA

DO NOT WRITE IN THIS AREA

DO NOT WRITE IN THIS AREA



Question 13 continued

---

---

---

---

---

---

---

---

---

---

---

---

---

---

---

---

---

---

---

---

---

---

---

---

---

---

---

---

---

---

DO NOT WRITE IN THIS AREA

DO NOT WRITE IN THIS AREA

DO NOT WRITE IN THIS AREA





Leave  
blank

**Question 13 continued**

DO NOT WRITE IN THIS AREA

DO NOT WRITE IN THIS AREA

DO NOT WRITE IN THIS AREA

**Q13**

**(Total 13 marks)**



14.

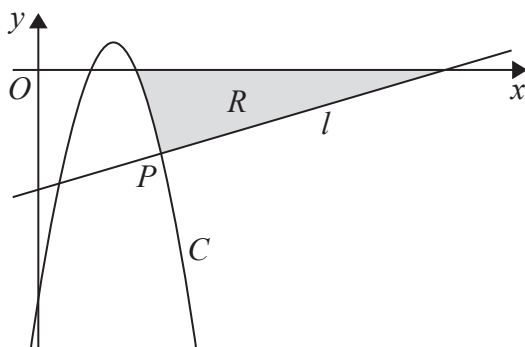


Figure 3

Figure 3 shows a sketch of the curve  $C$  with equation  $y = -x^2 + 6x - 8$ . The normal to  $C$  at the point  $P(5, -3)$  is the line  $l$ , which is also shown in Figure 3.

- (a) Find an equation for  $l$ , giving your answer in the form  $ax + by + c = 0$ , where  $a$ ,  $b$  and  $c$  are integers. (5)

The finite region  $R$ , shown shaded in Figure 3, is bounded below by the line  $l$  and the curve  $C$ , and is bounded above by the  $x$ -axis.

- (b) Find the exact value of the area of  $R$ . (6)

*(Solutions based entirely on graphical or numerical methods are not acceptable.)*

---

---

---

---

---

---

---

---

---

---

---

---

---

---

---

---

---

---

---

---

---

---

---

---

---

---

DO NOT WRITE IN THIS AREA

DO NOT WRITE IN THIS AREA

DO NOT WRITE IN THIS AREA









**Question 14 continued**

DO NOT WRITE IN THIS AREA

DO NOT WRITE IN THIS AREA

DO NOT WRITE IN THIS AREA

Blank lined area for writing the answer to Question 14.

**Q14**

--	--

**(Total 11 marks)**



P 4 8 2 5 3 A 0 4 3 4 8

15.

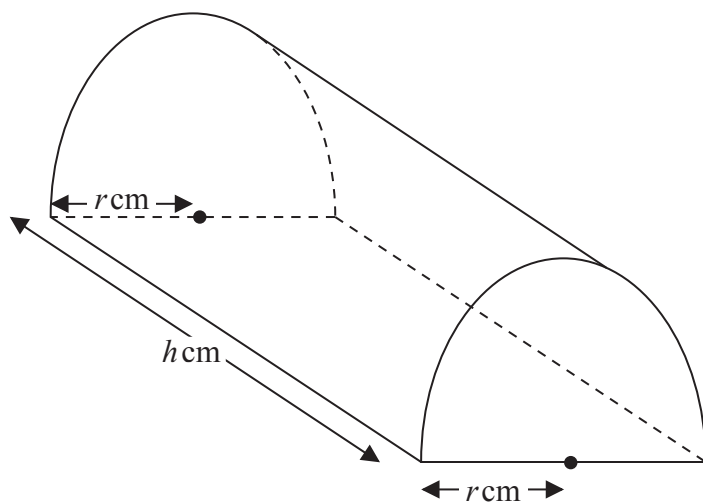


Figure 4

Figure 4 shows a solid wooden block. The block is a right prism with length  $h$  cm. The cross-section of the block is a semi-circle with radius  $r$  cm.

The total surface area of the block, including the curved surface, the two semi-circular ends and the rectangular base, is  $200\text{ cm}^2$

(a) Show that the volume  $V\text{ cm}^3$  of the block is given by

$$V = \frac{\pi r(200 - \pi r^2)}{4 + 2\pi} \tag{5}$$

(b) Use calculus to find the maximum value of  $V$ . Give your answer to the nearest  $\text{cm}^3$ . (6)

(c) Justify, by further differentiation, that the value of  $V$  that you have found is a maximum. (2)

---

---

---

---

---

---

---

---

---

---

---

---

---

---

---

---

---

---

---

---

---

---

---

---

DO NOT WRITE IN THIS AREA

DO NOT WRITE IN THIS AREA

DO NOT WRITE IN THIS AREA









