

6.

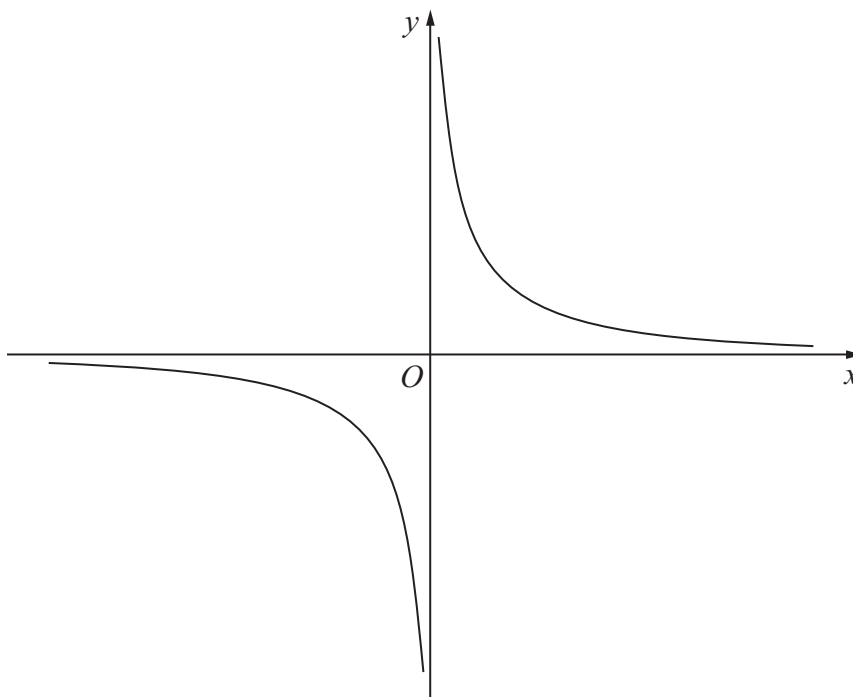
**Figure 1**

Figure 1 shows a sketch of the curve with equation $y = \frac{2}{x}$, $x \neq 0$

The curve C has equation $y = \frac{2}{x} - 5$, $x \neq 0$, and the line l has equation $y = 4x + 2$

(a) Sketch and clearly label the graphs of C and l on a single diagram.

On your diagram, show clearly the coordinates of the points where C and l cross the coordinate axes.

(5)

(b) Write down the equations of the asymptotes of the curve C .

(2)

(c) Find the coordinates of the points of intersection of $y = \frac{2}{x} - 5$ and $y = 4x + 2$

(5)

